

Hopewell Student Pick Up Procedures

Welcome to the 2017-2018 school year at Hopewell Elementary!

Parents can expect our students to begin exiting the building around 3:07 P.M. on school days and 1:37 P.M. on early out days. To view our early out days, please consult the 2017-2018 Pleasant Valley Community School District calendar.

It is our practice to have older siblings walk to the youngest sibling's classroom to meet up prior to exiting the building. This allows our families to be together when exiting and makes loading students into vehicles quick and efficient.

Drivers are asked to stay to the right when entering the parking lot and follow the indicated path on the map. All cars will need to pull as far forward as possible. All students will be between the Kindergarten and First and Second grade wing. Staff will assist with getting your student to your car. Please stay in your vehicle at all times when in the pick up lane. Once loaded, please merge to the left and continue to carefully exit the parking lot.

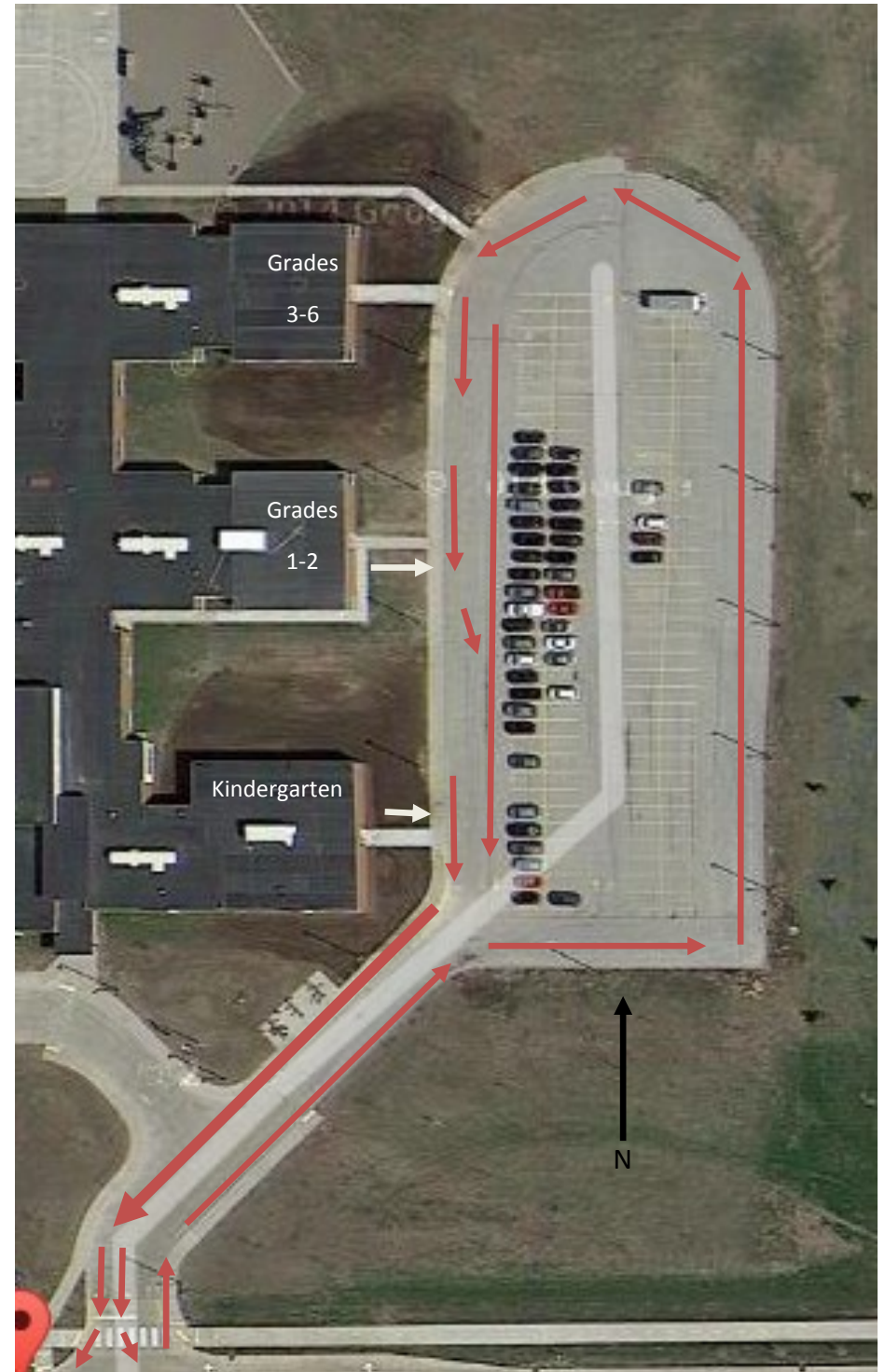
Please stay safe and use our crosswalk. All students and adults who are crossing from the building to the parking lot should cross at this location. Please use extra caution when crossing at this point and be sure to have your student in close proximity to you for increased safety.

During dismissal, no cars are allowed to drive in front of the main doors of the building. The main doors are the exit point for a majority of our students who walk and we need your help in ensuring their safety.

Thank you for following our procedures and contributing to a safe and timely student dismissal. If at anytime you have questions, concerns, or comments, please contact me right away. I can be reached at 563.332.0250 or by email at welchchris@pleasval.k12.ia.us.

Sincerely,

Chris Welch, Principal



Hopewell Student Drop Off Procedures

Welcome to the 2017-2018 school year at Hopewell Elementary!

Hopewell Hikers 8:00 a.m. - 8:15 a.m.

Hopewell Hikers takes place on the playground. A staff member supervises and walks with students as everyone walks laps and visits with friends. At 8:15 students line up and enter the building. Upon entering the building, students report to class after a stop at their locker.

Arrival After 8:15 (Learning Starts at 8:30)

Students arriving after 8:15 may report to their locker and then to class. The doors on the east side of the building open at 8:15, while the front doors open at 8:00a.m.

Drop Off

Drivers are asked to stay to the right when entering the parking lot and follow the indicated path on the map. All cars will need to pull as far forward as possible. Students may be dropped off at any point on the sidewalk. Please stay in your vehicle at all times when in the drop off lane. If you need to get out of your car, please park in the lot. Once loaded, please merge to the left and continue to carefully exit the parking lot.

Please stay safe and use our crosswalk. All students and adults who are crossing from the building to the parking lot should cross at this location. Please use extra caution when crossing at this point and be sure to have your student in close proximity to you for increased safety.

During arrival no cars are allowed to drive in front of the main doors of the building. The main doors are the exit point for a majority of our students who walk and we need your help in ensuring their safety.

Thank you for following our procedures and contributing to a safe and timely student arrival.

Sincerely,

Mr. Welch, Principal

